

EC Roof Fans

DV(S)...G / DVE(S)...G / DVW(S)...G



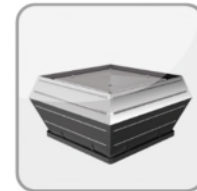
Contents

3	Description – DV(S)...G / DVE(S)...G / DVW(S)...G
3	Application Areas
3	Casing
4	Impellers
4	Motor and Motor Protection
4	Electrical Connection
4	Installation
5	Air Volume Control
5	Scope of Delivery
6	Construction Scheme

DV(S)...G / DVE(S)...G / DVW(S)...G – EC-Roof Fans

vertical outlet

- easy to install
- weatherproof housing
- Motor protection by thermal contacts
- with energy saving EC-motors
- (S) Sound absorbing cover



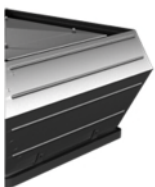
Description:

The Rosenberg EC roof fans are used for ventilation of department stores, supermarkets, factories, swimming pools, kitchens, dining halls, warehouses, garages, farms and stables. The fans are suitable for mounting on a flat or any shaped roof.

Application areas:



Casing:



DV...G / DVE...G / DVW...G

Casing made of seawater-resistant aluminum

DVS...G / DVES...G / DVWS...G

Casing made of seawater-resistant aluminum with integrated sound absorbing cover.

BASE FRAME

Base frame with bolts for tightening of inlet accessories and rectangular inlet cone made of galvanized steel.

Impellers:

Impellers are mounted directly to the rotor of the external rotor EC motor and are balanced dynamically at two levels together with the rotor according to quality level G2.5/G6.3 DIN ISO 21940-11.



DV(S)...G

Backward curved impellers made of plastic

DVE(S)...G

Efficiency optimized and sound optimized backward curved impellers of the Revolution series made of plastic.

DVW(S)...G

Efficiency optimized backward curved impellers made of aluminum.

Motor and Motor Protection:

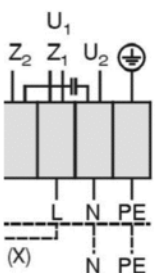
EC external rotor motors according to DIN EN 60034-5 are used, ball bearing mounted and with integrated thermal contact for motor protection.



The steplessly controllable EC motors are characterised by a very high degree of efficiency, even in the partial load range, as well as good control and regulation behaviour. They are easy to connect, individually preconfigured, compact in design and demonstrate a high power density. The implementation of additional functions (e.g. volume flow and pressure control) is possible. All motors can be speed controlled in the range 0-100 %.

The motor protection is integrated. All necessary parameters such as temperature, blocked rotor, over- and undervoltage and power are continuously checked and monitored via intelligent fault management.

Electrical Connection:



Up to size 225

The electrical connection is possible over the mounted terminal box.

From size 250

The electrical connection is possible over the mounted ON/OFF-switch.

Installation:



The EC roof fans are fitted with the required equipment (flat roof socket, base for sloping roof, socket sound absorber and sound absorber for sloping roof 1-45°) on the roof. The pre-assembled threaded stud allows easy and effortless installation.

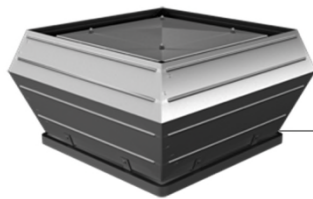
Air Volume Control:

For more information see accessories!



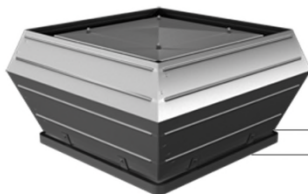
Operation mode: **Open-loop control (speed control)**

For example with a potentiometer 0-10V signal



Operation mode: **Closed-loop control**

with the integrated pressure sensor
up to Size 310 the pressure regulator without display
from Size 355 the pressure sensor with display



Delivery information:

Both versions can already be ordered preconfigured accordingly (open- or closed-loop control).
You will find the article number in our fan selection software RoVent or our catalogue EC world of fans.

Scope of Delivery:

- Roof fan (DV_(S)...G)
- ON/OFF-switch mounted from size 250
- Documentation

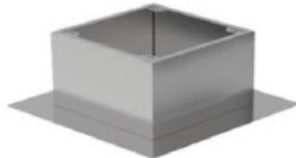
Construction Scheme:



DV_(S)...G
 EC-Roof fan vertical
 ON-OFF-Switch mounted



KR
 Swing out frame



SD
 Socket Sound Attenuator
 Aluminium



AP
 Adapter Plate
 for suction side
 accessories!



VS
 Shutter
 automatic



ASS
 Inlet Collar



ASF
 Inlet Flange

