

SD – Socket sound absorber

Accessories for Roof Fans

Socket sound absorber for a suction side sound absorbing.
 Casing made of corrosion-resistant aluminium with a 20mm thick abrasion-proof insulating. Sound absorbing links made of incombustible material. Average absorbing value of 8dB at 250Hz. The Socket sound attenuators are suitable for maximum temperature of 100°C. Ex variations with discharge sound traps.

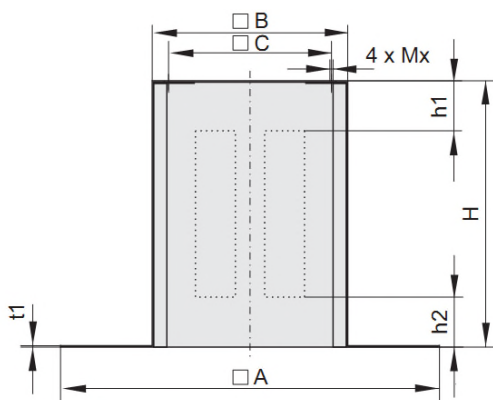


NOTIFICATION:

For the installation of suction side accessories (canal side), the adapter plate (AP) is absolutely necessary. The size 800/900 has an integrated adapter plate.

Technical Data:

Dimensions:

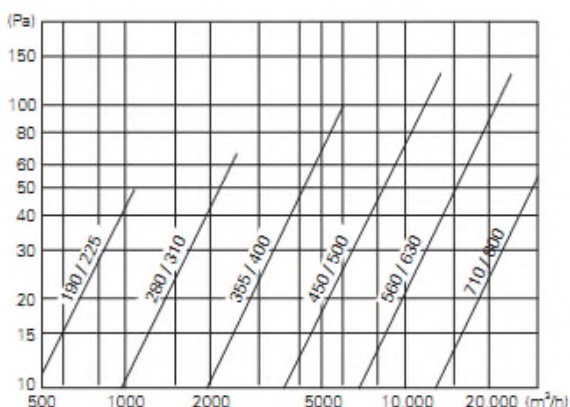


| Size | Type | Art.-No. | A [mm] | B [mm] | C [mm] | H [mm] | Mx | t1 [mm] | h1 [mm] | h2 [mm] | Weight [kg] |
|-----------|---------------|-----------|--------|--------|--------|--------|-----|---------|---------|---------|-------------|
| 450 / 500 | SD 450/500 | A40-45018 | 900 | 625 | 535 | 900 | M10 | 2.0 | 270 | 250 | 26 |
| | SD 450/500 Ex | A40-45071 | | | | | | | | | |
| 560 / 630 | SD 560/630 | A40-56018 | 1200 | 895 | 750 | 1070 | M10 | 2.0 | 320 | 320 | 39 |
| | SD 560/630 Ex | A40-56072 | | | | | | | | | |
| 710 | SD 710 | A40-71018 | 1300 | 985 | 840 | 1160 | M10 | 2.0 | 300 | 360 | 46 |
| 800 K | SD 800 K | A40-80001 | 1740 | 1205 | 1050 | 1230 | M12 | 3.0 | 405 | 125 | 120 |
| 800 / 900 | SD 800/900 | A40-80000 | 1740 | 1205 | 1050 | 1230 | M12 | 4.0 | 405 | 125 | 154 |

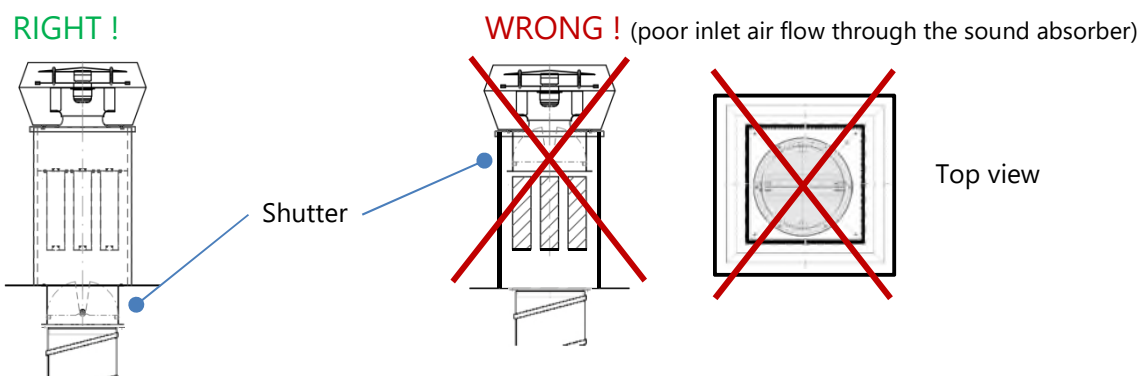
Attenuation values:

| Size | Attenuation values in dB | | | | | | | Average sound absorbing rate |
|------------------|--------------------------|--------|--------|-------|-------|-------|-------|------------------------------|
| | 125 Hz | 250 Hz | 500 Hz | 1 kHz | 2 kHz | 4 kHz | 8 kHz | |
| 450 / 500 | 5 | 8 | 13 | 20 | 22 | 21 | 15 | 17 dB |
| 560 / 630 | 5 | 7 | 12 | 18 | 21 | 20 | 14 | 15 dB |
| 710 | 5 | 7 | 11 | 18 | 20 | 19 | 13 | 16 dB |
| 800 K | 6 | 8 | 14 | 20 | 25 | 23 | 11 | 16 dB |
| 800 / 900 | 6 | 8 | 14 | 20 | 25 | 23 | 11 | 16 dB |

Pressure losses:



Installation instructions with closing flap (VS / VM):



Scope of delivery:

- Socket sound absorber (SD)
- Contains mounting material